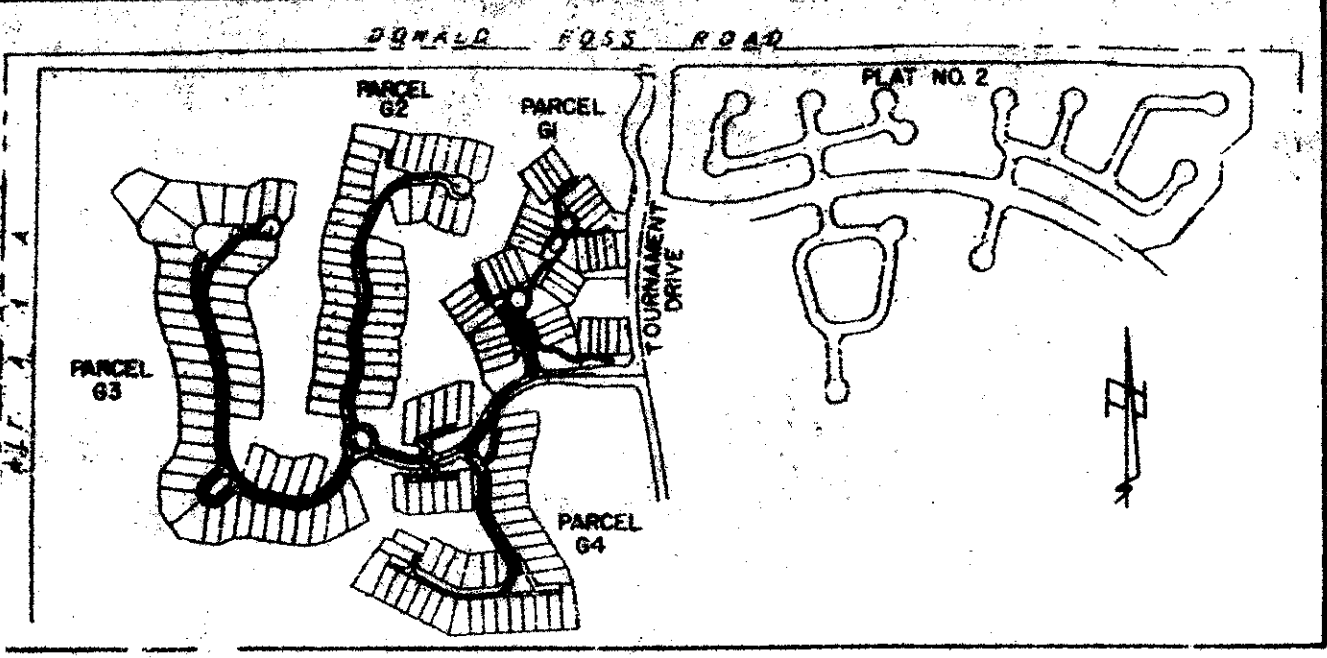


55/87

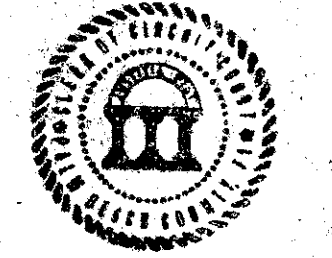
VICINITY MAP n.t.s.



A PLAT OF PARCEL 64 FRENCHMAN'S CREEK, A P.U.D. BEING A REPLAT OF A PORTION OF TRACT 'A' PLAT NO. 6 FRENCHMAN'S CREEK, A P.U.D. RECORDED IN PLAT BOOK 44, PAGES 133 THROUGH 137 LYING IN SECTION 30, TOWNSHIP 41 SOUTH, RANGE 43 EAST PALM BEACH COUNTY, FLORIDA

87 SHEET 1 OF 3

COUNTY OF PALM BEACH STATE OF FLORIDA This Plat was filed for record on 7.31.86 the 31 day of December 1986 and duly recorded in Plat Book No. 55 on page 87 of 87 KENN B. DUNKLE, Clerk Circuit Court Barbara A. Hunt, D.C.



JULY, 1986

CERTIFICATE OF OWNERSHIP & DEDICATION

COUNTY OF PALM BEACH STATE OF FLORIDA S.S. KNOW ALL MEN BY THESE PRESENTS THAT HAFT-GAINES ASSOCIATES, A FLORIDA GENERAL PARTNERSHIP, BY H-G ASSOCIATES, LTD., A FLORIDA LIMITED PARTNERSHIP AND GENERAL PARTNER OF HAFT-GAINES ASSOCIATES; HAFT-GAINES GROUP, INC., A FLORIDA CORPORATION AND CORPORATE GENERAL PARTNER OF H-G ASSOCIATES, LTD., OWNERS OF THE LAND SHOWN HEREON, BEING IN SECTION 30, TOWNSHIP 41 SOUTH, RANGE 43 EAST, PALM BEACH COUNTY, FLORIDA, AND SHOWN HEREON AS FRENCHMAN'S CREEK PARCEL 64, MORE PARTICULARLY DESCRIBED ABOVE HAS CAUSED THE SAME TO BE SURVEYED AND PLATTED AS SHOWN HEREON AND DO HEREBY DEDICATE AS FOLLOWS:

DESCRIPTION

S.S. A PARCEL OF LAND LYING IN SECTION 30, TOWNSHIP 41 SOUTH, RANGE 43 EAST, PALM BEACH COUNTY, FLORIDA; MORE PARTICULARLY DESCRIBED AS FOLLOWS: COMMENCE AT THE NORTHWEST CORNER OF SAID SECTION 30 PROCEED S 88°30'54" E ALONG THE NORTH LINE OF SAID SECTION 30 (THE NORTH LINE OF SAID SECTION 30 IS TAKEN TO BEAR S 88°30'54" E AND ALL OTHER BEARINGS ARE RELATIVE THERETO), A DISTANCE OF 2146.59 FEET; THENCE S 01°29'06" W, A DISTANCE OF 60 FEET TO THE SOUTH RIGHT-OF-WAY LINE OF DONALD ROSS ROAD, SAID LINE BEING PARALLEL WITH AND 60 FEET SOUTHERLY OF SAID NORTH LINE OF SECTION 30; THENCE S 19°30'28" W, A DISTANCE OF 705.11 FEET; THENCE S 19°25'50" W, A DISTANCE OF 401.29 FEET; THENCE S 44°56'47" E, A DISTANCE OF 374.06 FEET TO THE POINT OF BEGINNING; THENCE CONTINUING S 44°56'47" E, A DISTANCE OF 50.00 FEET TO A POINT ON A CURVE CONCAVE TO THE SOUTHEAST HAVING A RADIUS OF 275.00 FEET, A RADIAL LINE FROM SAID POINT BEARS S 44°56'47" E; THENCE NORTHEASTERLY ALONG THE ARC OF SAID CURVE THROUGH A CENTRAL ANGLE OF 36°43'09" AN ARC DISTANCE OF 176.24 FEET TO A POINT FROM WHICH A RADIAL LINE BEARS S 08°13'39" E; THENCE S 07°10'46" E, A DISTANCE OF 1013.62 FEET; THENCE S 87°19'14" W, A DISTANCE OF 523.03 FEET; THENCE N 62°40'46" W, A DISTANCE OF 465.44 FEET; THENCE N 37°00'45" E, A DISTANCE OF 63.03 FEET; THENCE N 65°12'09" W, A DISTANCE OF 16.12 FEET; THENCE N 65°24'08" W, A DISTANCE OF 47.19 FEET; THENCE N 27°29'18" E, A DISTANCE OF 416.49 FEET; THENCE N 24°40'01" E, A DISTANCE OF 59.31 FEET; THENCE N 19°42'41" E, A DISTANCE OF 50.00 FEET TO A POINT ON A CURVE CONCAVE TO THE NORTHWEST HAVING A RADIUS OF 275.00 FEET, A RADIAL LINE FROM SAID POINT BEARS N 19°42'41" E; THENCE NORTHEASTERLY ALONG THE ARC OF SAID CURVE THROUGH A CENTRAL ANGLE OF 79°47'31" AN ARC DISTANCE OF 382.97 FEET TO THE POINT OF TANGENCY; THENCE N 29°55'10" E, A DISTANCE OF 43.33 FEET TO THE POINT OF CURVATURE OF A CURVE CONCAVE TO THE SOUTHEAST HAVING A RADIUS OF 325.00 FEET; THENCE NORTHEASTERLY ALONG THE ARC OF SAID CURVE THROUGH A CENTRAL ANGLE OF 15°08'03" AN ARC DISTANCE OF 85.85 FEET TO THE POINT OF BEGINNING. CONTAINING 14.819 ACRES.

- 1. THE WATER MANAGEMENT TRACT 'A' AND 20' MAINTENANCE EASEMENT, AS SHOWN HEREON, ARE HEREBY DEDICATED TO THE FRENCHMAN'S CREEK PROPERTY OWNERS ASSOCIATION INC. FOR DRAINAGE EASEMENT PURPOSES, AND SHALL BE THE PERPETUAL MAINTENANCE OBLIGATION OF SAID ASSOCIATION, WITHOUT RECOURSE TO PALM BEACH COUNTY AND WITHOUT RECOURSE TO NORTHERN PALM BEACH COUNTY WATER CONTROL DISTRICT.
2. THE LANDSCAPE TRACTS, AS SHOWN HEREON, ARE HEREBY DEDICATED TO THE FRENCHMAN'S CREEK PROPERTY OWNERS ASSOCIATION INC. FOR LANDSCAPE AND UTILITY PURPOSES, AND SHALL BE THE PERPETUAL MAINTENANCE OBLIGATION OF SAID ASSOCIATION, WITHOUT RECOURSE TO PALM BEACH COUNTY AND WITHOUT RECOURSE TO NORTHERN PALM BEACH COUNTY WATER CONTROL DISTRICT.
3. TRACTS 'A', 'B', 'C', AS SHOWN HEREON, ARE HEREBY DEDICATED TO THE FRENCHMAN'S CREEK PROPERTY OWNERS ASSOCIATION INC. FOR THE CONSTRUCTION, MAINTENANCE OF ROADS, LANDSCAPE, UTILITIES AND DRAINAGE, AND SHALL BE THE PERPETUAL MAINTENANCE OBLIGATION OF SAID ASSOCIATION, WITHOUT RECOURSE TO PALM BEACH COUNTY AND WITHOUT RECOURSE TO NORTHERN PALM BEACH COUNTY WATER CONTROL DISTRICT.
4. STREETS AND RIGHTS-OF-WAY, AS SHOWN HEREON, ARE HEREBY DEDICATED TO THE FRENCHMAN'S CREEK PROPERTY OWNERS ASSOCIATION INC. FOR THE CONSTRUCTION, MAINTENANCE OF PRIVATE ROADS, PUBLIC AND PRIVATE UTILITIES AND DRAINAGE, AND SHALL BE THE PERPETUAL MAINTENANCE OBLIGATION OF SAID ASSOCIATION, WITHOUT RECOURSE TO PALM BEACH COUNTY NOR TO THE NORTHERN PALM BEACH COUNTY WATER CONTROL DISTRICT.
5. THE UTILITY EASEMENTS AS SHOWN HEREON ARE HEREBY DEDICATED IN PERPETUITY FOR THE CONSTRUCTION AND MAINTENANCE OF PUBLIC AND PRIVATE UTILITIES.

IN WITNESS WHEREOF, HAFT-GAINES ASSOCIATES, A FLORIDA GENERAL PARTNERSHIP, BY H-G ASSOCIATES, LTD., A FLORIDA LIMITED PARTNERSHIP AND GENERAL PARTNER OF HAFT-GAINES ASSOCIATES; HAFT-GAINES GROUP, INC., A FLORIDA CORPORATION AND CORPORATE GENERAL PARTNER OF H-G ASSOCIATES, LTD., HAS CAUSED THESE PRESENTS TO BE SIGNED BY ITS PRESIDENT AND ATTESTED BY ITS SECRETARY, AND CAUSED ITS CORPORATE SEAL TO BE AFFIXED HERETO BY AND WITH THE AUTHORITY OF ITS BOARD OF DIRECTORS THIS 21st DAY OF November 1986.

ATTEST: [Signature] BURT HAFT SECRETARY BY: [Signature] JACK GAINES PRESIDENT

ACKNOWLEDGEMENT

COUNTY OF PALM BEACH STATE OF FLORIDA S.S. BEFORE ME, PERSONALLY APPEARED JACK GAINES AND BURT HAFT, TO ME WELL KNOWN, AND KNOWN TO ME TO BE THE PRESIDENT AND SECRETARY RESPECTIVELY OF HAFT-GAINES GROUP, INC., A FLORIDA CORPORATION, AND THEY ACKNOWLEDGED THAT THEY EXECUTED SUCH INSTRUMENT AS SUCH OFFICERS OF SAID CORPORATION.

WITNESS MY HAND AND OFFICIAL SEAL THIS 21st DAY OF November 1986.

MY COMMISSION EXPIRES: 6/23/90 [Signature] NOTARY PUBLIC

MORTGAGEE'S CONSENT

COUNTY OF ILLINOIS STATE OF ILLINOIS S.S. THE UNDERSIGNED HEREBY CERTIFIES THAT IT IS THE HOLDER OF MORTGAGE UPON THE HEREON DESCRIBED PROPERTY AND DOES HEREBY JOIN IN AND CONSENT TO THE DEDICATION OF THE LANDS DESCRIBED IN THE DEDICATION HERETO, BY THE OWNERS THEREOF AND AGREES THAT ITS MORTGAGE, WHICH IS RECORDED IN OFFICIAL RECORD BOOK 4752, PAGE 175 OF THE PUBLIC RECORDS OF PALM BEACH COUNTY, FLORIDA, SHALL BE SUBORDINATED TO THE DEDICATION SHOWN HEREON.

IN WITNESS WHEREOF, THE SAID CORPORATION HAS CAUSED THESE PRESENTS TO BE SIGNED BY ITS VICE PRESIDENT AND ATTESTED TO BY ITS SECRETARY AND ITS CORPORATE SEAL TO BE AFFIXED HEREBY BY AND WITH THE AUTHORITY OF ITS BOARD OF DIRECTORS, THIS 12th DAY OF November, A.D., 1986.

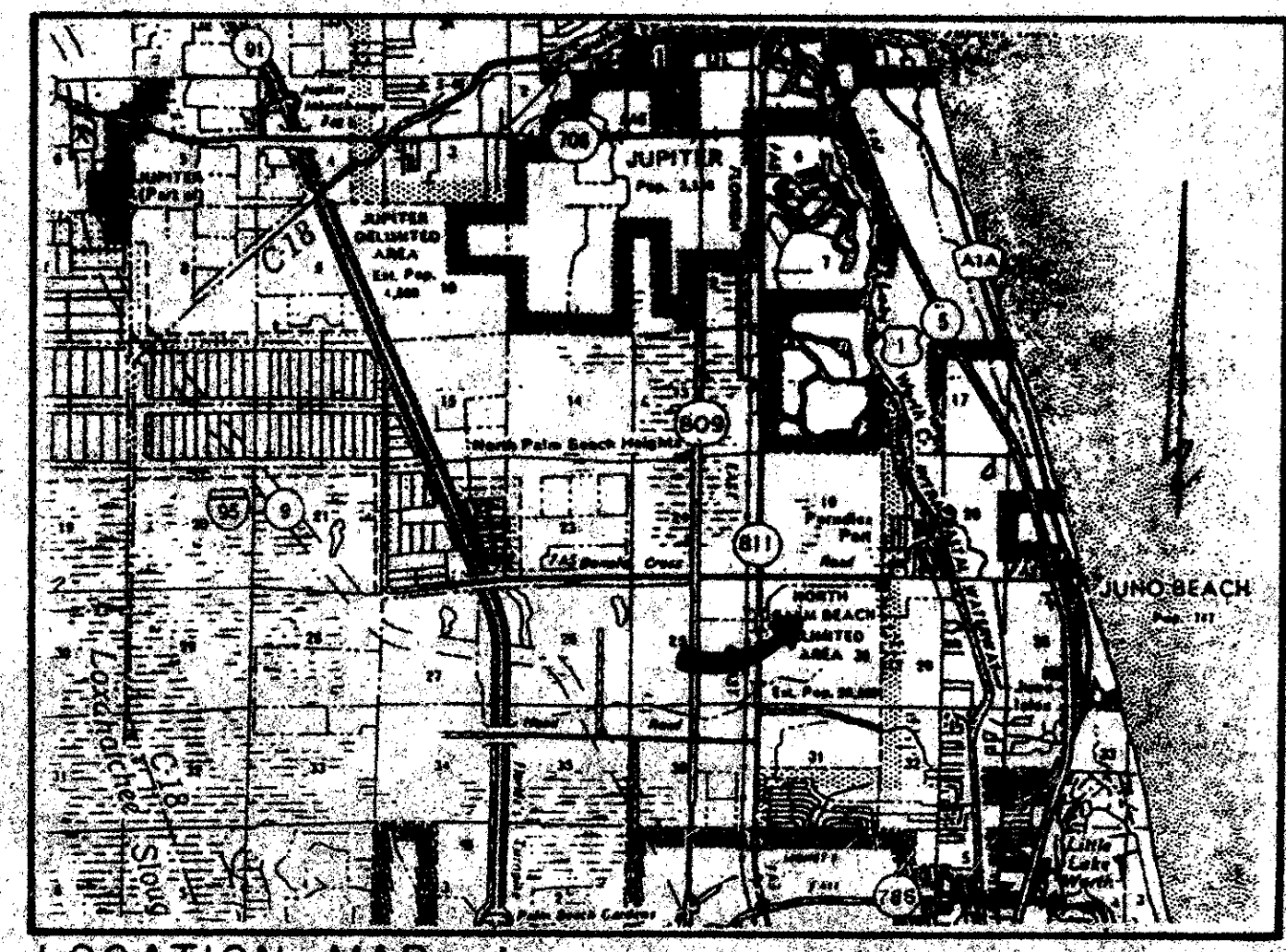
JOHN D. AND CATHERINE T. MACARTHUR FOUNDATION, AN ILLINOIS NOT FOR PROFIT CORPORATION ATTEST: [Signature] SECRETARY BY: [Signature] VICE PRESIDENT

ACKNOWLEDGEMENT

COUNTY OF COOK STATE OF ILLINOIS S.S. BEFORE ME, PERSONALLY APPEARED Lawrence G. Martin AND [Signature] TO ME WELL KNOWN, AND KNOWN TO ME TO BE THE INDIVIDUALS DESCRIBED IN AND WHO EXECUTED THE FOREGOING CONSENT OF MORTGAGE HOLDER, AS VICE PRESIDENT AND SECRETARY OF THE ABOVE NAMED JOHN D. AND CATHERINE T. MACARTHUR FOUNDATION, AN ILLINOIS NOT FOR PROFIT CORPORATION, AND SEVERALLY ACKNOWLEDGED TO AND BEFORE ME THAT THEY EXECUTED SUCH INSTRUMENT AS SUCH OFFICERS OF SAID CORPORATION, AND THAT THE SEAL AFFIXED TO THE FOREGOING CONSENT OF MORTGAGE HOLDER IS THE CORPORATE SEAL OF SAID CORPORATION AND THAT IT WAS AFFIXED TO SAID INSTRUMENT BY DUE AND REGULAR CORPORATE AUTHORITY, AND THAT SAID CONSENT OF MORTGAGE HOLDER IS THE FREE ACT AND DEED OF SAID CORPORATION.

WITNESS MY HAND AND OFFICIAL SEAL THIS 13th DAY OF November 1986.

MY COMMISSION EXPIRES: 4-2-87 [Signature] NOTARY PUBLIC



LOCATION MAP n.t.s.

PARCEL 64 FRENCHMAN'S CREEK 55/87

Table with 2 columns: 1, 3